

RETAIL TRADE

AUSTRALIA

EMBARGO: 11:30AM (CANBERRA TIME) MON 1 JUNE 1998

APRIL KEY FIGURES

TREND ESTIMATES

Turnover at current prices (\$ millions)	Mar 98	Apr 98	% change
	11 307.1	11 334.1	0.2
	Apr 97	Apr 98	% change
	10 870.5	11 334.1	4.3

SEASONALLY ADJUSTED ESTIMATES

Turnover at current prices (\$ millions)	Mar 98	Apr 98	% change
	11 310.0	11 334.0	0.2
	Apr 97	Apr 98	% change
	10 777.4	11 334.0	5.2

APRIL KEY POINTS

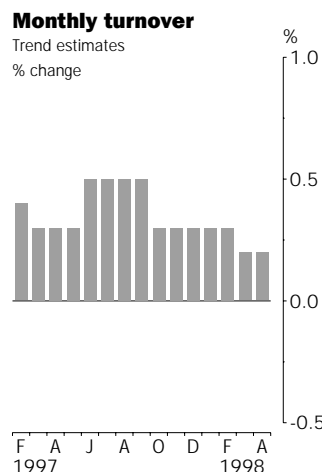
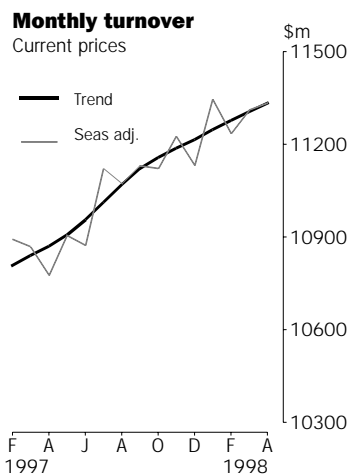
TREND ESTIMATES

- Growth in the trend estimate of turnover for the Australian Retail and Hospitality /Services series has eased slightly over recent months with growth of 0.2% for March and April 1998.
- Over the three months to April 1998 the trend estimate increased by \$85.9m. The only industries to record growth were Food retailing (\$45.4m), Other retailing (\$34.6m), Hospitality and services (\$22.8m) and Department stores (\$3.3m).
- In terms of monthly trend estimate growth rates, the Food retailing growth rate has slowed from 0.6% in January 1998 to a weakish 0.2% in April 1998. Department store growth rates continue to be influenced by variable seasonally adjusted results recorded over the past year. The Clothing and soft good, Household good and Recreational good retailing groups have been in decline for at least the last four months.
- The strongest growth rates over recent months were recorded in Queensland, South Australia and the Northern Territory. New South Wales and the Australian Capital Territory have moved into decline in recent months, while Tasmania has been in decline for each of the last six months.

TAKE CARE!
Trend estimates are revised as new monthly data become available.

ORIGINAL ESTIMATES

- In original terms, Australian turnover increased by 6.1% in April 1998 over April 1997.
- Chains and other large retailers increased turnover by 4.4% while in the same period small retailers fell by 1.0%.



▪ For further information about these and related statistics, contact Margaret Keenan on 02 6252 5451. For information about constant price estimates contact Leon Ting on 02 6252 6807.

NOTES

FORTHCOMING ISSUES

<i>ISSUE</i>	<i>RELEASE DATE</i>
May 1998	1 July 1998
June 1998	31 July 1998
July 1998	1 September 1998

CHANGES IN THIS ISSUE

There are no changes in this issue.

SAMPLING ERRORS

Standard errors for the Australian estimates (original data) for April 1998 contained in this publication are:

<i>DATA SERIES</i>	<i>ESTIMATE</i>	<i>STANDARD ERROR</i>
Level of retail turnover (\$m)	10 970.9	104.5
Change from March to April (\$m)	197.2	83.1
% change from March to April	1.8	0.8

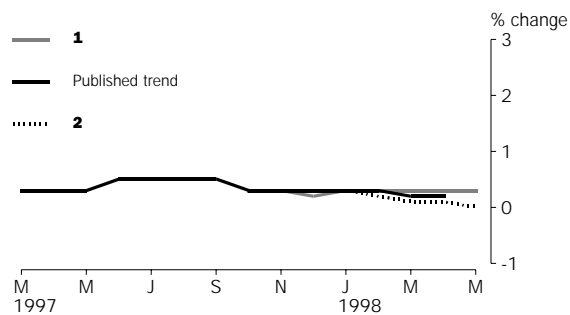
For more information see the Explanatory notes, paragraphs 12–15, or contact Margaret Keenan on 02 6252 5451 .

WHAT IF?

The most recent trend estimates published in this release are likely to be revised when next month's seasonally adjusted estimates become available. To assist readers of this publication in analysing retail trends, the effect of two possible scenarios on the previous trend estimates of the percentage change in retail turnover are presented below.

- 1** The May seasonally adjusted estimate of retail turnover is 1.0% higher than the April estimate.
- 2** The May seasonally adjusted estimate of retail turnover is 1.0% lower than the April estimate.

TAKE CARE!
Trend estimates are subject to revision as subsequent data become available. See Explanatory note 9.

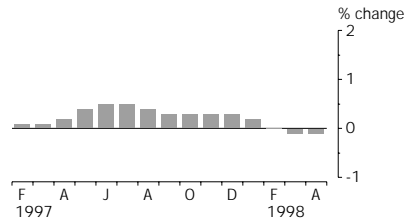


W. McLennan
Australian Statistician

STATE TRENDS

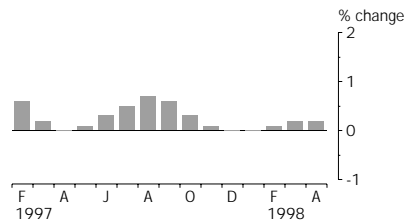
MONTHLY PERCENTAGE CHANGE IN TREND ESTIMATES

NEW SOUTH WALES



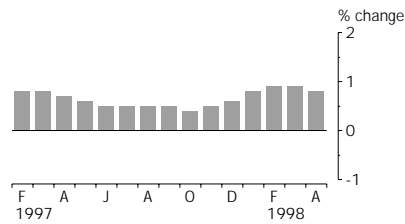
Following a long period of growth the trend estimate has fallen into decline for both March and April. The only groups not in decline were Household good retailing and Department stores.

VICTORIA



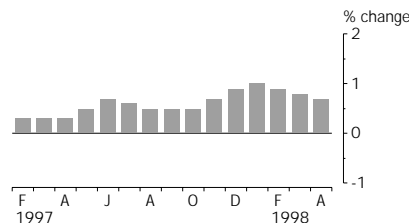
The growth rate remained steady at 0.2% in April 1998. Strong growth was recorded for the Other retailing, Hospitality and services and Clothing retailing groups.

QUEENSLAND



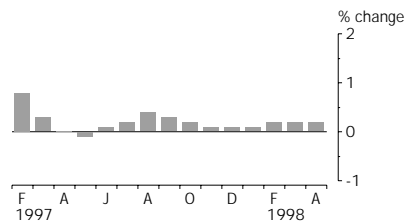
The Queensland trend estimate remained strong with growth of around 0.8%. The major contributors to this growth were the Food retailing and Hospitality and services groups.

SOUTH AUSTRALIA



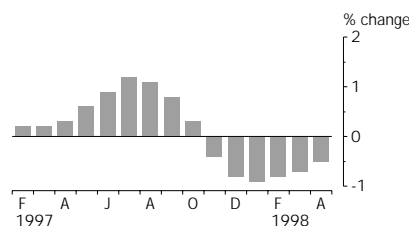
While still strong, growth in the trend estimate fell slightly in April 1998. Department stores and Household good retailing were in decline. Other groups recorded moderate to strong growth.

WESTERN AUSTRALIA



The Western Australia growth rate has been consistent at 0.2% for each of the last three months. Growth has been strongest in Department stores and the Household good and Food groups.

TASMANIA

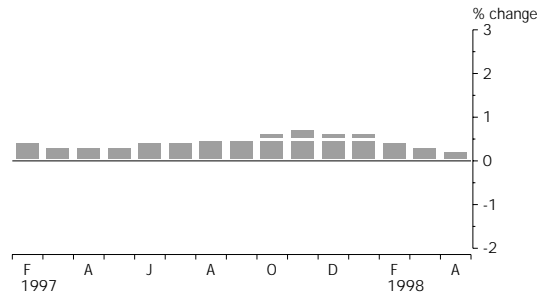


Following a fall of 0.9% in January 1998 the rate of decrease in the trend estimate has eased gradually to -0.5% in April. This was due to improved trend results for Hospitality and services.

INDUSTRY TRENDS

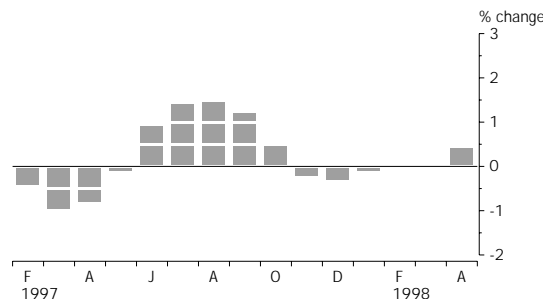
MONTHLY PERCENTAGE CHANGE IN TREND ESTIMATES

FOOD RETAILING



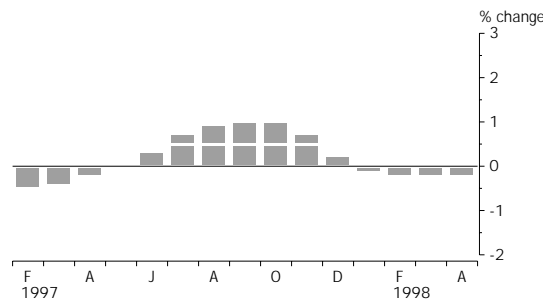
There has been an easing of the growth rate over the last five months, from the strong 0.7% growth observed in November 1997 to the 0.2% recorded for April. All States contributed to this easing.

DEPARTMENT STORES



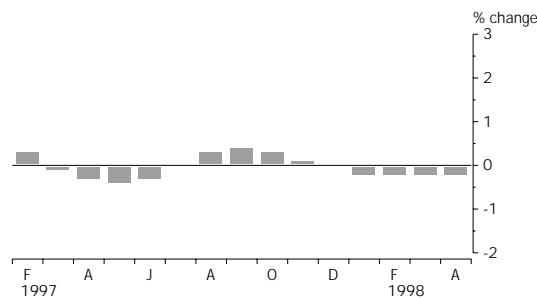
After five months of no growth or decline, the April trend estimate recorded growth of 0.4%. Moderate growth was observed in New South Wales, Queensland and Western Australia.

CLOTHING AND SOFT GOOD RETAILING



The Clothing retailing trend estimate has been in decline for each of the last four months. In April 1998, the only States to record growth were Victoria, South Australia and Tasmania.

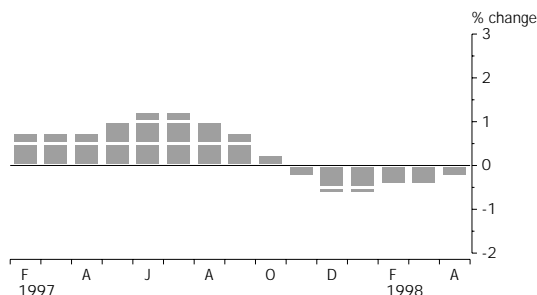
HOUSEHOLD GOOD RETAILING



The decline in the trend estimate for Household good retailing has remained at -0.2% over each of the four months to April 1998. However, growth was strong in New South Wales, Western Australia and the Northern Territory with the other States remaining in decline.

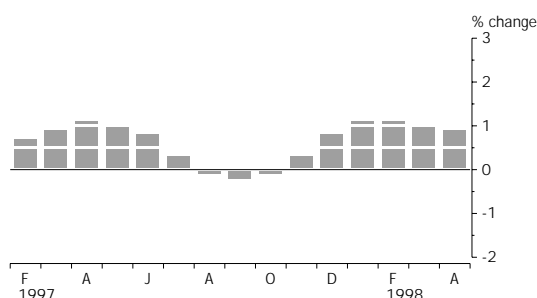
MONTHLY PERCENTAGE CHANGE IN TREND ESTIMATES

RECREATIONAL GOOD RETAILING



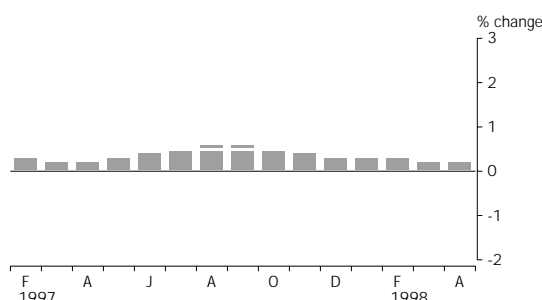
April 1998 was the sixth consecutive month that the trend estimate was in decline. However, the rate of decline has slowed. While most States remained in decline, Queensland and South Australia recorded relatively strong growth for April 1998.

OTHER RETAILING



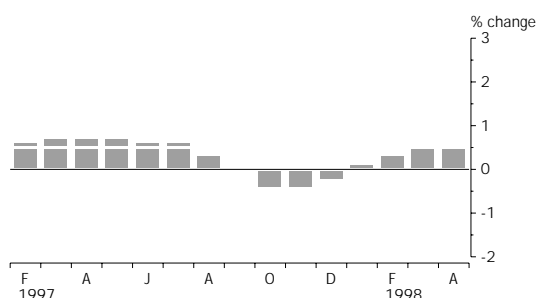
The trend estimate recorded growth of around 1.0% for each of the last five months. The major contributors to this strong growth were Victoria, and to a lesser extent Queensland.

TOTAL RETAIL (excluding Hospitality and Services)



Over recent months movement in the trend estimate for Total retail (excluding Hospitality and services) has been similar to that for Total industries (including Hospitality and services).

HOSPITALITY AND SERVICES



This industry group has recorded growth of 0.5% for each of the last two months. In April 1998, New South Wales, Western Australia and the Northern Territory were in decline. All other States recorded strong growth.

RETAIL TURNOVER, By Industry Group(a): All series

Month	Food retailing	Department stores	Clothing and soft good retailing	Household good retailing	Recreational good retailing	Other retailing	Hospitality and services	Total
ORIGINAL (\$ million)								
1997								
February	4 043.4	727.6	547.1	1 188.1	539.5	949.6	1 646.4	9 641.7
March	4 414.3	858.0	615.4	1 196.6	574.3	988.6	1 801.1	10 448.2
April	4 218.0	849.1	696.9	1 191.7	577.2	1 029.6	1 773.2	10 335.7
May	4 437.3	995.0	758.2	1 274.9	583.6	1 081.4	1 805.4	10 935.7
June	4 140.5	830.4	667.0	1 249.1	570.8	1 009.4	1 752.9	10 220.2
July	4 406.7	971.3	707.6	1 264.9	600.7	1 095.1	1 813.7	10 860.0
August	4 408.8	836.2	647.0	1 236.3	603.4	1 104.5	1 851.8	10 687.9
September	4 323.1	939.3	679.4	1 232.1	627.4	1 108.9	1 804.3	10 714.4
October	4 643.8	977.1	735.7	1 331.2	640.2	1 169.2	1 907.7	11 404.9
November	4 538.7	1 111.5	744.5	1 342.6	662.7	1 186.0	1 905.0	11 491.0
December	5 162.1	1 879.4	1 041.3	1 742.3	941.6	1 638.4	2 172.4	14 577.6
1998								
January	4 765.8	917.4	708.3	1 261.4	622.6	1 077.4	1 883.8	11 236.7
February	4 282.5	716.4	577.6	1 126.4	565.6	1 009.3	1 667.9	9 945.5
March	4 553.2	823.1	655.4	1 227.3	600.7	1 073.6	1 840.6	10 773.8
April	4 543.4	981.0	730.2	1 165.9	584.2	1 105.1	1 861.2	10 970.9
SEASONALLY ADJUSTED (\$ million)								
1997								
February	4 353.3	992.2	692.5	1 340.6	599.5	1 090.6	1 822.8	10 891.5
March	4 422.1	987.0	688.4	1 288.5	598.4	1 082.0	1 802.8	10 869.1
April	4 334.0	920.9	696.3	1 273.3	629.3	1 105.9	1 817.7	10 777.4
May	4 388.6	966.4	721.4	1 278.1	613.4	1 113.6	1 823.6	10 905.3
June	4 410.8	900.5	682.0	1 284.9	621.1	1 113.1	1 860.4	10 872.8
July	4 441.0	1 059.1	702.4	1 287.6	620.5	1 154.0	1 857.5	11 122.0
August	4 458.4	959.5	709.8	1 281.2	638.9	1 135.1	1 890.5	11 073.5
September	4 474.1	1 048.8	712.4	1 282.6	662.8	1 099.8	1 849.9	11 130.5
October	4 496.2	980.7	722.5	1 288.8	653.4	1 122.1	1 858.3	11 121.9
November	4 532.0	1 021.3	747.5	1 310.3	625.8	1 127.8	1 862.4	11 227.2
December	4 514.6	984.1	736.5	1 295.3	633.9	1 123.2	1 845.5	11 133.2
1998								
January	4 654.8	1 045.7	715.6	1 302.3	648.0	1 159.2	1 821.0	11 346.5
February	4 617.6	977.2	732.0	1 269.8	629.0	1 159.2	1 850.3	11 235.2
March	4 629.6	988.0	727.2	1 288.3	630.4	1 175.4	1 871.1	11 310.0
April	4 587.4	1 028.4	726.2	1 286.7	629.8	1 183.4	1 892.1	11 334.0
TREND ESTIMATES (\$ million)								
1997								
February	4 356.7	976.6	701.1	1 296.0	603.0	1 081.4	1 800.7	10 809.2
March	4 371.5	966.7	698.3	1 294.6	607.1	1 091.3	1 812.6	10 841.5
April	4 383.7	958.5	696.9	1 290.1	611.5	1 102.9	1 825.1	10 870.5
May	4 395.9	957.8	697.0	1 284.8	617.5	1 114.5	1 837.5	10 906.7
June	4 411.3	966.7	699.1	1 281.0	625.0	1 122.9	1 849.2	10 955.9
July	4 429.5	980.1	703.8	1 280.8	632.6	1 126.4	1 859.6	11 012.9
August	4 451.4	994.8	710.1	1 284.5	638.9	1 125.8	1 865.8	11 071.2
September	4 475.6	1 006.5	717.4	1 289.8	643.1	1 123.7	1 865.1	11 121.2
October	4 503.7	1 011.2	724.5	1 293.4	644.7	1 123.0	1 858.4	11 158.9
November	4 533.0	1 009.6	729.6	1 295.0	643.2	1 126.9	1 850.9	11 188.2
December	4 562.4	1 006.0	731.3	1 294.7	639.5	1 135.7	1 847.0	11 216.6
1998								
January	4 588.1	1 004.7	730.5	1 292.5	635.8	1 148.1	1 848.5	11 248.2
February	4 608.3	1 004.4	729.1	1 289.4	633.1	1 160.5	1 854.1	11 279.0
March	4 623.3	1 004.0	727.7	1 286.4	630.6	1 172.6	1 862.6	11 307.1
April	4 633.5	1 008.0	726.0	1 283.5	629.5	1 182.7	1 871.3	11 334.1

(a) See paragraph 3 of the Explanatory Notes

RETAIL TURNOVER PERCENTAGE CHANGE, By Industry Group(a): All series

Month	Food retailing	Department stores	Clothing and soft good retailing	Household good retailing	Recreational good retailing	Other retailing	Hospitality and services	Total
ORIGINAL (% change from preceding month)								
1997								
February	-9.3	-13.5	-21.9	-5.1	-7.0	-4.3	-10.7	-9.6
March	9.2	17.9	12.5	0.7	6.4	4.1	9.4	8.4
April	-4.4	-1.0	13.2	-0.4	0.5	4.1	-1.6	-1.1
May	5.2	17.2	8.8	7.0	1.1	5.0	1.8	5.8
June	-6.7	-16.5	-12.0	-2.0	-2.2	-6.7	-2.9	-6.5
July	6.4	17.0	6.1	1.3	5.2	8.5	3.5	6.3
August	0.0	-13.9	-8.6	-2.3	0.4	0.9	2.1	-1.6
September	-1.9	12.3	5.0	-0.3	4.0	0.4	-2.6	0.2
October	7.4	4.0	8.3	8.0	2.0	5.4	5.7	6.4
November	-2.3	13.8	1.2	0.9	3.5	1.4	-0.1	0.8
December	13.7	69.1	39.9	29.8	42.1	38.1	14.0	26.9
1998								
January	-7.7	-51.2	-32.0	-27.6	-33.9	-34.2	-13.3	-22.9
February	-10.1	-21.9	-18.5	-10.7	-9.2	-6.3	-11.5	-11.5
March	6.3	14.9	13.5	9.0	6.2	6.4	10.4	8.3
April	-0.2	19.2	11.4	-5.0	-2.7	2.9	1.1	1.8
SEASONALLY ADJUSTED (% change from preceding month)								
1997								
February	-0.6	1.3	-2.2	4.8	0.2	3.1	1.2	0.8
March	1.6	-0.5	-0.6	-3.9	-0.2	-0.8	-1.1	-0.2
April	-2.0	-6.7	1.1	-1.2	5.2	2.2	0.8	-0.8
May	1.3	4.9	3.6	0.4	-2.5	0.7	0.3	1.2
June	0.5	-6.8	-5.5	0.5	1.3	0.0	2.0	-0.3
July	0.7	17.6	3.0	0.2	-0.1	3.7	-0.2	2.3
August	0.4	-9.4	1.1	-0.5	3.0	-1.6	1.8	-0.4
September	0.4	9.3	0.4	0.1	3.7	-3.1	-2.1	0.5
October	0.5	-6.5	1.4	0.5	-1.4	2.0	0.5	-0.1
November	0.8	4.1	3.5	1.7	-4.2	0.5	0.2	0.9
December	-0.4	-3.6	-1.5	-1.1	1.3	-0.4	-0.9	-0.8
1998								
January	3.1	6.3	-2.8	0.5	2.2	3.2	-1.3	1.9
February	-0.8	-6.5	2.3	-2.5	-2.9	0.0	1.6	-1.0
March	0.3	1.1	-0.7	1.5	0.2	1.4	1.1	0.7
April	-0.9	4.1	-0.1	-0.1	-0.1	0.7	1.1	0.2
TREND ESTIMATES (% change from preceding month)								
1997								
February	0.4	-0.4	-0.5	0.3	0.7	0.7	0.6	0.4
March	0.3	-1.0	-0.4	-0.1	0.7	0.9	0.7	0.3
April	0.3	-0.8	-0.2	-0.3	0.7	1.1	0.7	0.3
May	0.3	-0.1	0.0	-0.4	1.0	1.0	0.7	0.3
June	0.4	0.9	0.3	-0.3	1.2	0.8	0.6	0.5
July	0.4	1.4	0.7	0.0	1.2	0.3	0.6	0.5
August	0.5	1.5	0.9	0.3	1.0	-0.1	0.3	0.5
September	0.5	1.2	1.0	0.4	0.7	-0.2	0.0	0.5
October	0.6	0.5	1.0	0.3	0.2	-0.1	-0.4	0.3
November	0.7	-0.2	0.7	0.1	-0.2	0.3	-0.4	0.3
December	0.6	-0.3	0.2	0.0	-0.6	0.8	-0.2	0.3
1998								
January	0.6	-0.1	-0.1	-0.2	-0.6	1.1	0.1	0.3
February	0.4	0.0	-0.2	-0.2	-0.4	1.1	0.3	0.3
March	0.3	0.0	-0.2	-0.2	-0.4	1.0	0.5	0.2
April	0.2	0.4	-0.2	-0.2	-0.2	0.9	0.5	0.2

(a) See paragraph 3 of the Explanatory Notes

RETAIL TURNOVER, By Sub-Group(a): **Original**

Month	FOOD RETAILING.....				CLOTHING AND SOFT GOOD RETAILING.....			HOUSEHOLD GOOD RETAILING...				
	Super- markets and grocery stores	Takeaway food retailing	Other food retailing	Total	Total Department stores	Clothing retailing	Other clothing related retailing	Total	Furniture and floor covering retailing	Domestic hardware & house- ware retailing	Domestic appliance retailing	Total
\$ MILLION												
1997												
February	2 820.7	580.7	642.0	4 043.4	727.6	376.2	171.0	547.1	265.5	287.8	634.8	1 188.1
March	3 088.1	631.0	695.2	4 414.3	858.0	419.7	195.7	615.4	260.1	314.5	622.0	1 196.6
April	2 894.2	622.5	701.3	4 218.0	849.1	486.1	210.8	696.9	264.7	297.4	629.6	1 191.7
May	3 079.5	640.8	716.9	4 437.3	995.0	538.4	219.8	758.2	281.5	300.8	692.5	1 274.9
June	2 841.7	615.1	683.7	4 140.5	830.4	467.6	199.4	667.0	286.7	278.2	684.3	1 249.1
July	3 011.6	630.5	764.6	4 406.7	971.3	490.2	217.4	707.6	299.8	277.9	687.2	1 264.9
August	3 025.1	620.7	762.9	4 408.8	836.2	450.2	196.8	647.0	286.3	283.2	666.8	1 236.3
September	2 953.0	623.2	746.9	4 323.1	939.3	477.4	202.0	679.4	279.8	320.0	632.3	1 232.1
October	3 199.1	644.4	800.3	4 643.8	977.1	508.9	226.8	735.7	327.9	327.2	676.0	1 331.2
November	3 108.2	626.9	803.6	4 538.7	1 111.5	527.3	217.2	744.5	319.0	343.5	680.0	1 342.6
December	3 449.8	683.4	1 029.0	5 162.1	1 879.4	750.8	290.5	1 041.3	321.1	450.7	970.5	1 742.3
1998												
January	3 257.1	656.4	852.3	4 765.8	917.4	482.1	226.2	708.3	300.1	318.5	642.7	1 261.4
February	2 918.3	590.4	773.9	4 282.5	716.4	406.2	171.4	577.6	288.5	284.8	553.1	1 126.4
March	3 114.0	624.7	814.5	4 553.2	823.1	460.2	195.2	655.4	302.0	308.5	616.8	1 227.3
April	3 142.8	583.7	816.9	4 543.4	981.0	524.3	205.9	730.2	286.0	295.8	584.0	1 165.9
% CHANGE FROM PRECEDING MONTH												
1997												
February	-9.1	-12.0	-7.4	-9.3	-13.5	-19.9	-26.0	-21.9	-3.8	-8.3	-4.2	-5.1
March	9.5	8.7	8.3	9.2	17.9	11.6	14.5	12.5	-2.0	9.3	-2.0	0.7
April	-6.3	-1.3	0.9	-4.4	-1.0	15.8	7.7	13.2	1.8	-5.4	1.2	-0.4
May	6.4	2.9	2.2	5.2	17.2	10.8	4.3	8.8	6.4	1.2	10.0	7.0
June	-7.7	-4.0	-4.6	-6.7	-16.5	-13.2	-9.3	-12.0	1.8	-7.5	-1.2	-2.0
July	6.0	2.5	11.8	6.4	17.0	4.8	9.0	6.1	4.6	-0.1	0.4	1.3
August	0.4	-1.6	-0.2	0.0	-13.9	-8.2	-9.5	-8.6	-4.5	1.9	-3.0	-2.3
September	-2.4	0.4	-2.1	-1.9	12.3	6.0	2.7	5.0	-2.3	13.0	-5.2	-0.3
October	8.3	3.4	7.2	7.4	4.0	6.6	12.3	8.3	17.2	2.3	6.9	8.0
November	-2.8	-2.7	0.4	-2.3	13.8	3.6	-4.3	1.2	-2.7	5.0	0.6	0.9
December	11.0	9.0	28.0	13.7	69.1	42.4	33.7	39.9	0.6	31.2	42.7	29.8
1998												
January	-5.6	-3.9	-17.2	-7.7	-51.2	-35.8	-22.1	-32.0	-6.5	-29.3	-33.8	-27.6
February	-10.4	-10.1	-9.2	-10.1	-21.9	-15.7	-24.2	-18.5	-3.9	-10.6	-13.9	-10.7
March	6.7	5.8	5.2	6.3	14.9	13.3	13.9	13.5	4.7	8.3	11.5	9.0
April	0.9	-6.6	0.3	-0.2	19.2	13.9	5.5	11.4	-5.3	-4.1	-5.3	-5.0
% CHANGE FROM CORRESPONDING MONTH OF PREVIOUS YEAR												
1997												
February	1.3	-4.7	-3.7	-0.4	-1.3	-10.9	-0.6	-7.9	1.3	0.8	10.0	5.7
March	6.6	-1.8	1.6	4.5	5.6	-9.7	1.1	-6.5	-5.0	3.8	-0.5	-0.4
April	4.2	-1.5	1.9	2.9	-5.2	-4.1	9.6	-0.3	4.1	5.3	6.1	5.5
May	4.8	2.6	2.8	4.1	3.3	0.4	8.1	2.5	5.9	-1.7	3.1	2.5
June	2.8	3.1	0.5	2.4	-8.6	-5.5	-2.6	-4.6	5.3	-2.8	2.5	1.9
July	5.4	2.5	10.4	5.8	7.0	-3.2	6.8	-0.3	-0.1	-4.9	-2.0	-2.2
August	1.2	0.0	7.9	2.2	-6.0	-4.6	0.3	-3.1	-2.7	-3.2	-0.9	-1.8
September	5.0	4.0	10.7	5.8	12.6	3.0	1.2	2.5	1.5	10.1	2.1	3.9
October	5.0	2.9	11.9	5.8	4.6	0.7	1.2	0.8	6.1	-1.3	2.4	2.4
November	2.4	2.2	10.7	3.8	2.7	5.7	-1.3	3.5	5.5	-1.8	-1.3	0.1
December	5.5	4.3	15.4	7.2	2.3	5.5	-1.8	3.3	8.1	2.5	2.9	3.7
1998												
January	4.9	-0.5	22.9	6.9	9.1	2.7	-2.1	1.1	8.8	1.5	-3.0	0.7
February	3.5	1.7	20.5	5.9	-1.5	8.0	0.2	5.6	8.7	-1.1	-12.9	-5.2
March	0.8	-1.0	17.2	3.1	-4.1	9.6	-0.2	6.5	16.1	-1.9	-0.8	2.6
April	8.6	-6.2	16.5	7.7	15.5	7.9	-2.3	4.8	8.1	-0.5	-7.2	-2.2

(a) See paragraph 3 of the Explanatory Notes

RETAIL TURNOVER, By Sub-Group(a): **Original** *continued*

Month	RECREATIONAL GOOD RETAILING.....			OTHER RETAILING.....			HOSPITALITY AND SERVICES.....				Total all industries
	News-paper, book and stationery retailing	Other recreational good retailing	Total	Pharmaceutical cosmetic & toiletry retailing	Other retailing	Total	Hotels and licensed clubs	Cafes and restaurants	Selected services	Total	
\$ MILLION											
1997											
February	377.8	161.7	539.5	422.0	527.6	949.6	993.8	492.6	159.9	1 646.4	9 641.7
March	389.3	185.0	574.3	451.2	537.4	988.6	1 094.1	535.1	171.9	1 801.1	10 448.2
April	394.0	183.1	577.2	486.6	543.0	1 029.6	1 062.6	535.9	174.7	1 773.2	10 335.7
May	400.5	183.1	583.6	504.6	576.8	1 081.4	1 079.1	545.9	180.4	1 805.4	10 935.7
June	377.1	193.8	570.8	478.8	530.6	1 009.4	1 064.4	513.2	175.3	1 752.9	10 220.2
July	391.1	209.6	600.7	529.1	566.0	1 095.1	1 080.1	549.0	184.6	1 813.7	10 860.0
August	400.4	203.0	603.4	532.2	572.3	1 104.5	1 101.5	569.3	180.9	1 851.8	10 687.9
September	402.7	224.7	627.4	516.4	592.5	1 108.9	1 079.1	548.0	177.2	1 804.3	10 714.4
October	408.2	232.0	640.2	518.5	650.7	1 169.2	1 143.6	577.0	187.1	1 907.7	11 404.9
November	407.9	254.7	662.7	503.2	682.8	1 186.0	1 149.1	573.7	182.2	1 905.0	11 491.0
December	530.2	411.4	941.6	620.3	1 018.1	1 638.4	1 320.5	641.3	210.6	2 172.4	14 577.6
1998											
January	410.9	211.7	622.6	473.4	604.0	1 077.4	1 161.7	547.2	174.9	1 883.8	11 236.7
February	392.2	173.4	565.6	439.7	569.6	1 009.3	1 025.3	478.4	164.2	1 667.9	9 945.5
March	416.9	183.7	600.7	488.4	585.1	1 073.6	1 129.4	537.1	174.1	1 840.6	10 773.8
April	386.5	197.7	584.2	488.9	616.1	1 105.1	1 133.2	542.1	185.9	1 861.2	10 970.9
% CHANGE FROM PRECEDING MONTH											
1997											
February	-4.9	-11.6	-7.0	-4.1	-4.4	-4.3	-10.7	-8.3	-17.7	-10.7	-9.6
March	3.0	14.4	6.4	6.9	1.9	4.1	10.1	8.6	7.5	9.4	8.4
April	1.2	-1.0	0.5	7.8	1.0	4.1	-2.9	0.2	1.6	-1.6	-1.1
May	1.6	0.0	1.1	3.7	6.2	5.0	1.6	1.9	3.3	1.8	5.8
June	-5.9	5.8	-2.2	-5.1	-8.0	-6.7	-1.4	-6.0	-2.8	-2.9	-6.5
July	3.7	8.2	5.2	10.5	6.7	8.5	1.5	7.0	5.3	3.5	6.3
August	2.4	-3.2	0.4	0.6	1.1	0.9	2.0	3.7	-2.0	2.1	-1.6
September	0.6	10.7	4.0	-3.0	3.5	0.4	-2.0	-3.8	-2.0	-2.6	0.2
October	1.4	3.3	2.0	0.4	9.8	5.4	6.0	5.3	5.6	5.7	6.4
November	-0.1	9.8	3.5	-3.0	4.9	1.4	0.5	-0.6	-2.7	-0.1	0.8
December	30.0	61.5	42.1	23.3	49.1	38.1	14.9	11.8	15.6	14.0	26.9
1998											
January	-22.5	-48.5	-33.9	-23.7	-40.7	-34.2	-12.0	-14.7	-16.9	-13.3	-22.9
February	-4.6	-18.1	-9.2	-7.1	-5.7	-6.3	-11.7	-12.6	-6.1	-11.5	-11.5
March	6.3	5.9	6.2	11.1	2.7	6.4	10.1	12.3	6.1	10.4	8.3
April	-7.3	7.6	-2.7	0.1	5.3	2.9	0.3	0.9	6.8	1.1	1.8
% CHANGE FROM CORRESPONDING MONTH OF PREVIOUS YEAR											
1997											
February	-6.5	-4.6	-6.0	-4.0	11.5	4.0	-2.6	-6.4	-12.2	-4.8	-0.9
March	-3.4	2.7	-1.5	-3.3	13.8	5.3	-1.8	-2.2	-13.3	-3.2	1.7
April	5.5	2.9	4.7	5.5	16.1	10.8	-0.6	-1.9	-7.4	-1.7	2.3
May	2.8	-0.2	1.8	1.8	14.0	8.0	1.0	2.6	-3.0	1.1	3.5
June	0.4	7.5	2.7	1.7	14.8	8.2	1.7	-1.7	-4.2	0.1	1.0
July	3.2	14.2	6.7	7.3	14.5	10.9	4.3	3.3	-2.9	3.2	4.6
August	1.6	12.5	5.1	7.5	9.9	8.7	3.4	6.5	-1.9	3.8	1.7
September	8.8	20.7	12.8	10.0	14.2	12.2	5.1	6.2	-1.8	4.7	6.7
October	6.8	15.3	9.7	1.9	17.0	9.8	4.4	9.7	-1.5	5.3	5.5
November	3.7	10.7	6.3	-1.7	15.7	7.6	3.1	8.7	0.7	4.5	3.9
December	5.5	8.4	6.7	2.5	16.7	10.9	3.4	8.8	3.1	4.9	5.8
1998											
January	3.4	15.8	7.3	7.6	9.4	8.6	4.4	1.8	-9.9	2.1	5.3
February	3.8	7.2	4.8	4.2	8.0	6.3	3.2	-2.9	2.7	1.3	3.2
March	7.1	-0.7	4.6	8.3	8.9	8.6	3.2	0.4	1.3	2.2	3.1
April	-1.9	7.9	1.2	0.5	13.5	7.3	6.6	1.2	6.4	5.0	6.1

(a) See paragraph 3 of the Explanatory Notes

RETAIL TURNOVER, By State: **All series**

Month	New South Wales	Victoria	Queensland	South Australia	Western Australia	Tasmania	Northern Territory	Australian Capital Territory	Australia
ORIGINAL (\$ million)									
1997									
February	3 453.2	2 256.9	1 724.9	694.5	1 003.5	233.8	98.0	176.9	9 641.7
March	3 741.9	2 459.1	1 867.3	762.4	1 067.4	252.1	105.1	192.9	10 448.2
April	3 644.1	2 465.2	1 846.3	762.1	1 060.1	254.6	108.5	194.9	10 335.7
May	3 892.6	2 543.5	1 985.6	798.9	1 126.2	263.7	114.6	210.7	10 935.7
June	3 670.7	2 367.9	1 869.6	741.8	1 019.4	244.1	113.8	192.9	10 220.2
July	3 851.1	2 490.5	2 015.3	804.6	1 097.2	259.4	128.4	213.6	10 860.0
August	3 787.2	2 473.0	1 983.9	777.8	1 080.6	255.3	125.9	204.1	10 687.9
September	3 802.2	2 483.2	1 980.3	777.2	1 091.5	255.8	121.9	202.4	10 714.4
October	4 001.7	2 660.6	2 116.1	840.1	1 164.2	278.1	125.9	218.3	11 404.9
November	4 076.4	2 679.9	2 099.4	856.9	1 153.7	283.9	117.5	223.2	11 491.0
December	5 200.1	3 455.3	2 624.8	1 066.7	1 464.4	349.8	133.9	282.6	14 577.6
1998									
January	3 989.1	2 571.5	2 110.4	856.0	1 137.8	260.4	106.8	204.6	11 236.7
February	3 530.9	2 288.3	1 840.3	741.5	1 007.6	245.1	102.6	189.3	9 945.5
March	3 806.7	2 522.0	1 979.9	810.5	1 077.7	258.3	112.8	205.9	10 773.8
April	3 826.7	2 565.1	2 041.1	848.6	1 101.1	257.2	116.9	214.4	10 970.9
SEASONALLY ADJUSTED (\$ million)									
1997									
February	3 885.9	2 545.9	1 968.9	789.8	1 125.0	257.2	115.0	203.9	10 891.5
March	3 855.4	2 560.2	1 974.1	791.2	1 119.1	260.7	112.6	195.7	10 869.1
April	3 807.8	2 534.7	1 969.1	785.4	1 104.7	261.2	114.4	200.1	10 777.4
May	3 892.4	2 528.3	1 992.6	794.7	1 115.6	259.4	114.0	208.3	10 905.3
June	3 887.2	2 529.2	1 971.9	799.2	1 104.6	263.7	114.1	202.8	10 872.8
July	3 965.9	2 572.6	2 044.6	822.8	1 111.3	267.2	117.4	220.2	11 122.0
August	3 909.6	2 588.8	2 029.5	811.2	1 137.0	267.2	117.2	213.1	11 073.5
September	3 967.9	2 605.4	2 013.1	812.6	1 126.8	275.2	119.9	209.7	11 130.5
October	3 926.0	2 595.9	2 044.4	817.9	1 130.8	275.7	120.3	211.0	11 121.9
November	3 947.9	2 642.1	2 072.9	828.3	1 124.1	276.0	117.7	218.0	11 227.2
December	3 984.2	2 592.2	2 026.3	809.9	1 120.2	269.2	117.7	213.6	11 133.2
1998									
January	4 043.4	2 590.3	2 102.5	872.2	1 141.1	259.2	119.5	218.1	11 346.5
February	3 973.9	2 580.8	2 099.8	843.1	1 129.6	269.8	120.3	218.0	11 235.2
March	3 969.6	2 652.4	2 105.1	845.9	1 139.3	265.4	120.2	212.0	11 310.0
April	3 957.9	2 621.0	2 152.5	865.8	1 135.3	261.3	123.3	216.9	11 334.0
TREND ESTIMATES (\$ million)									
1997									
February	3 849.2	2 535.3	1 949.4	788.5	1 111.6	258.8	113.9	202.4	10 809.2
March	3 854.0	2 541.3	1 965.3	790.6	1 115.1	259.3	113.7	202.1	10 841.5
April	3 863.6	2 542.4	1 979.3	793.3	1 114.9	260.2	113.8	203.0	10 870.5
May	3 879.2	2 544.3	1 990.5	797.2	1 114.3	261.7	114.4	205.1	10 906.7
June	3 898.3	2 551.2	2 001.3	802.7	1 114.9	264.1	115.4	208.0	10 955.9
July	3 916.2	2 564.9	2 011.9	807.8	1 117.6	267.2	116.6	210.7	11 012.9
August	3 931.7	2 582.4	2 022.7	811.9	1 122.1	270.3	117.7	212.5	11 071.2
September	3 945.4	2 597.1	2 032.7	815.9	1 125.7	272.4	118.4	213.5	11 121.2
October	3 957.5	2 605.3	2 041.9	820.3	1 127.9	273.1	118.8	214.1	11 158.9
November	3 968.6	2 606.9	2 052.2	825.8	1 128.9	272.1	118.9	214.7	11 188.2
December	3 978.6	2 605.9	2 065.3	833.0	1 129.7	270.0	119.0	215.2	11 216.6
1998									
January	3 985.1	2 606.3	2 081.9	841.0	1 131.1	267.7	119.4	215.9	11 248.2
February	3 986.4	2 609.4	2 099.6	848.6	1 133.2	265.6	120.0	216.2	11 279.0
March	3 983.4	2 614.0	2 117.8	855.5	1 135.5	263.8	120.8	216.3	11 307.1
April	3 981.1	2 619.3	2 134.0	861.8	1 137.4	262.5	121.7	216.1	11 334.1

RETAIL TURNOVER PERCENTAGE CHANGE, By State: **All series**

Month	New South Wales	Victoria	Queensland	South Australia	Western Australia	Tasmania	Northern Territory	Australian Capital Territory	Australia
ORIGINAL (% change from preceding month)									
1997									
February	-8.6	-9.5	-11.9	-10.3	-9.9	-8.9	-4.6	-8.3	-9.6
March	8.4	9.0	8.3	9.8	6.4	7.8	7.1	9.1	8.4
April	-2.6	0.2	-1.1	0.0	-0.7	1.0	3.3	1.0	-1.1
May	6.8	3.2	7.5	4.8	6.2	3.6	5.6	8.1	5.8
June	-5.7	-6.9	-5.8	-7.1	-9.5	-7.4	-0.7	-8.4	-6.5
July	4.9	5.2	7.8	8.5	7.6	6.3	12.8	10.7	6.3
August	-1.7	-0.7	-1.6	-3.3	-1.5	-1.6	-2.0	-4.4	-1.6
September	0.4	0.4	-0.2	-0.1	1.0	0.2	-3.1	-0.8	0.2
October	5.2	7.1	6.9	8.1	6.7	8.7	3.3	7.9	6.4
November	1.9	0.7	-0.8	2.0	-0.9	2.1	-6.7	2.3	0.8
December	27.6	28.9	25.0	24.5	26.9	23.2	14.0	26.6	26.9
1998									
January	-23.3	-25.6	-19.6	-19.8	-22.3	-25.5	-20.2	-27.6	-22.9
February	-11.5	-11.0	-12.8	-13.4	-11.4	-5.9	-4.0	-7.5	-11.5
March	7.8	10.2	7.6	9.3	7.0	5.4	10.0	8.8	8.3
April	0.5	1.7	3.1	4.7	2.2	-0.4	3.6	4.1	1.8
SEASONALLY ADJUSTED (% change from preceding month)									
1997									
February	1.3	0.8	1.1	-0.2	-0.1	0.1	0.5	-1.2	0.8
March	-0.8	0.6	0.3	0.2	-0.5	1.4	-2.1	-4.0	-0.2
April	-1.2	-1.0	-0.3	-0.7	-1.3	0.2	1.6	2.2	-0.8
May	2.2	-0.3	1.2	1.2	1.0	-0.7	-0.3	4.1	1.2
June	-0.1	0.0	-1.0	0.6	-1.0	1.7	0.1	-2.7	-0.3
July	2.0	1.7	3.7	2.9	0.6	1.3	2.9	8.6	2.3
August	-1.4	0.6	-0.7	-1.4	2.3	0.0	-0.2	-3.2	-0.4
September	1.5	0.6	-0.8	0.2	-0.9	3.0	2.3	-1.6	0.5
October	-1.1	-0.4	1.6	0.7	0.4	0.2	0.3	0.6	-0.1
November	0.6	1.8	1.4	1.3	-0.6	0.1	-2.1	3.3	0.9
December	0.9	-1.9	-2.2	-2.2	-0.4	-2.5	0.0	-2.0	-0.8
1998									
January	1.5	-0.1	3.8	7.7	1.9	-3.7	1.6	2.1	1.9
February	-1.7	-0.4	-0.1	-3.3	-1.0	4.1	0.6	0.0	-1.0
March	-0.1	2.8	0.3	0.3	0.9	-1.6	0.0	-2.8	0.7
April	-0.3	-1.2	2.3	2.4	-0.4	-1.6	2.5	2.3	0.2
TREND ESTIMATES (% change from preceding month)									
1997									
February	0.1	0.6	0.8	0.3	0.8	0.2	-0.4	-0.5	0.4
March	0.1	0.2	0.8	0.3	0.3	0.2	-0.2	-0.2	0.3
April	0.2	0.0	0.7	0.3	0.0	0.3	0.1	0.5	0.3
May	0.4	0.1	0.6	0.5	-0.1	0.6	0.5	1.0	0.3
June	0.5	0.3	0.5	0.7	0.1	0.9	0.9	1.4	0.5
July	0.5	0.5	0.5	0.6	0.2	1.2	1.0	1.3	0.5
August	0.4	0.7	0.5	0.5	0.4	1.1	0.9	0.9	0.5
September	0.3	0.6	0.5	0.5	0.3	0.8	0.7	0.5	0.5
October	0.3	0.3	0.4	0.5	0.2	0.3	0.3	0.3	0.3
November	0.3	0.1	0.5	0.7	0.1	-0.4	0.1	0.3	0.3
December	0.3	0.0	0.6	0.9	0.1	-0.8	0.1	0.3	0.3
1998									
January	0.2	0.0	0.8	1.0	0.1	-0.9	0.3	0.3	0.3
February	0.0	0.1	0.9	0.9	0.2	-0.8	0.5	0.1	0.3
March	-0.1	0.2	0.9	0.8	0.2	-0.7	0.6	0.0	0.2
April	-0.1	0.2	0.8	0.7	0.2	-0.5	0.7	-0.1	0.2

RETAIL TURNOVER, By Industry Group(a)—New South Wales: All series

Month	Food retailing	Department stores	Clothing and soft good retailing	Household good retailing	Recreational good retailing	Other retailing	Hospitality and services	Total
ORIGINAL (\$ million)								
1997								
February	1 352.8	249.4	223.7	420.5	199.7	331.9	675.1	3 453.2
March	1 487.1	285.0	242.7	430.0	212.1	349.1	735.9	3 741.9
April	1 417.1	281.7	268.3	402.1	201.1	351.7	722.1	3 644.1
May	1 485.9	337.5	300.7	455.7	211.1	362.7	739.0	3 892.6
June	1 386.3	287.2	267.5	442.9	209.8	352.3	724.9	3 670.7
July	1 480.2	341.4	278.4	436.7	214.7	372.0	727.8	3 851.1
August	1 497.7	281.5	250.9	411.3	211.7	373.8	760.5	3 787.2
September	1 469.0	320.6	260.5	413.8	223.2	375.4	739.6	3 802.2
October	1 568.5	332.0	272.9	424.1	216.9	411.5	775.8	4 001.7
November	1 544.9	382.1	278.4	417.5	232.7	434.9	785.9	4 076.4
December	1 763.3	658.3	410.4	570.6	319.4	598.0	880.1	5 200.1
1998								
January	1 608.4	321.2	264.9	419.2	213.9	375.4	786.0	3 989.1
February	1 445.6	237.1	213.3	384.5	203.3	357.8	689.2	3 530.9
March	1 527.2	278.7	236.0	432.5	219.5	362.2	750.6	3 806.7
April	1 493.8	335.7	265.9	398.2	208.0	380.1	744.9	3 826.7
SEASONALLY ADJUSTED (\$ million)								
1997								
February	1 458.0	342.2	277.9	474.6	219.2	374.2	739.9	3 885.9
March	1 487.8	329.5	267.4	445.2	214.8	378.0	732.7	3 855.4
April	1 455.1	314.7	271.6	440.6	219.6	378.3	727.8	3 807.8
May	1 481.5	327.9	283.2	452.9	221.2	384.7	741.0	3 892.4
June	1 464.5	314.2	274.8	455.6	223.7	389.0	765.4	3 887.2
July	1 512.0	364.5	279.8	446.9	214.0	400.5	748.2	3 965.9
August	1 505.2	328.1	276.4	438.9	211.6	385.2	764.2	3 909.6
September	1 537.5	358.4	275.1	427.1	229.9	374.6	765.4	3 967.9
October	1 517.4	336.8	272.8	415.0	225.2	398.1	760.6	3 926.0
November	1 526.7	347.2	280.8	399.3	216.2	410.3	767.4	3 947.9
December	1 539.2	337.0	284.4	413.7	232.8	406.2	770.8	3 984.2
1998								
January	1 568.6	366.8	267.6	444.7	238.7	396.2	761.0	4 043.4
February	1 560.5	325.7	265.1	434.7	224.0	405.0	758.9	3 973.9
March	1 550.9	336.5	259.6	452.7	220.0	394.1	755.7	3 969.6
April	1 506.0	360.1	266.5	436.3	229.3	405.6	754.0	3 957.9
TREND ESTIMATES (\$ million)								
1997								
February	1 459.0	332.4	277.8	451.1	219.5	375.1	734.2	3 849.2
March	1 463.8	329.0	276.3	452.0	219.5	377.8	735.5	3 854.0
April	1 469.7	326.8	275.6	452.3	219.0	381.3	738.8	3 863.6
May	1 477.5	327.6	275.6	451.7	218.7	384.5	743.8	3 879.2
June	1 487.0	331.5	276.1	448.8	218.7	386.5	749.7	3 898.3
July	1 497.1	336.4	276.9	442.9	218.8	388.2	755.9	3 916.2
August	1 507.8	341.5	277.5	434.4	219.5	390.0	760.9	3 931.7
September	1 518.6	345.3	277.8	425.4	221.3	392.6	764.3	3 945.4
October	1 529.6	346.4	277.6	418.6	223.8	395.7	765.8	3 957.5
November	1 538.5	345.5	276.6	417.3	226.3	398.8	765.7	3 968.6
December	1 544.7	344.3	274.5	421.5	227.9	401.2	764.7	3 978.6
1998								
January	1 547.9	344.1	271.5	428.4	228.2	402.5	762.6	3 985.1
February	1 548.0	344.3	268.2	435.5	227.9	402.5	760.0	3 986.4
March	1 544.8	344.7	265.2	441.5	227.3	402.1	757.6	3 983.4
April	1 540.8	346.8	262.7	446.6	227.0	400.7	755.4	3 981.1

(a) See paragraph 3 of the Explanatory Notes

RETAIL TURNOVER, By Industry Group(a)—Victoria: All series

Month	Food retailing	Department stores	Clothing and soft good retailing	Household good retailing	Recreational good retailing	Other retailing	Hospitality and services	Total
ORIGINAL (\$ million)								
1997								
February	1 009.1	171.9	118.2	320.1	132.2	220.5	284.9	2 256.9
March	1 084.0	214.3	143.1	319.9	142.2	229.8	326.0	2 459.1
April	1 053.7	212.6	173.4	325.2	147.0	242.5	310.7	2 465.2
May	1 104.6	241.0	169.8	327.6	141.1	254.6	304.8	2 543.5
June	1 028.5	200.4	147.1	333.1	134.8	235.7	288.4	2 367.9
July	1 069.4	226.3	164.2	331.5	139.6	254.5	305.0	2 490.5
August	1 069.6	198.2	148.1	336.8	144.1	268.7	307.6	2 473.0
September	1 047.4	226.6	154.5	325.6	151.8	272.5	304.9	2 483.2
October	1 124.7	232.6	168.7	372.2	162.6	271.4	328.4	2 660.6
November	1 101.1	272.3	178.6	373.3	169.4	264.6	320.6	2 679.9
December	1 256.5	465.3	245.5	482.2	250.5	383.4	371.9	3 455.3
1998								
January	1 128.9	214.2	155.6	320.1	158.6	254.7	339.4	2 571.5
February	1 022.6	174.2	134.6	280.6	142.7	236.5	297.0	2 288.3
March	1 085.9	208.9	163.8	300.6	150.8	272.9	339.1	2 522.0
April	1 079.1	246.6	189.2	288.6	139.6	281.7	340.2	2 565.1
SEASONALLY ADJUSTED (\$ million)								
1997								
February	1 073.8	238.2	152.4	360.9	146.5	256.7	317.5	2 545.9
March	1 081.5	240.1	160.1	348.5	154.1	252.5	323.5	2 560.2
April	1 074.2	220.9	158.7	344.5	162.2	258.9	315.3	2 534.7
May	1 084.7	233.8	157.8	336.2	148.6	259.0	308.2	2 528.3
June	1 104.1	211.7	155.6	339.4	150.9	264.3	303.2	2 529.2
July	1 090.4	253.3	161.7	336.2	147.5	269.4	314.1	2 572.6
August	1 093.0	229.3	168.3	346.2	155.8	273.8	322.5	2 588.8
September	1 089.4	252.5	169.0	341.1	162.2	285.5	305.8	2 605.4
October	1 086.4	241.1	168.7	356.3	164.3	253.4	325.6	2 595.9
November	1 111.4	253.8	181.0	374.8	159.6	247.1	314.4	2 642.1
December	1 090.6	241.7	171.0	362.9	163.0	252.6	310.4	2 592.2
1998								
January	1 088.3	249.5	155.3	318.3	159.6	288.4	330.9	2 590.3
February	1 087.3	240.9	174.0	313.1	158.7	275.9	330.9	2 580.8
March	1 109.6	248.0	177.8	316.7	164.1	295.8	340.4	2 652.4
April	1 078.7	244.6	176.7	317.5	155.0	304.7	343.8	2 621.0
TREND ESTIMATES (\$ million)								
1997								
February	1 075.1	235.6	155.6	348.6	150.9	251.9	315.9	2 535.3
March	1 080.6	233.4	156.2	347.7	151.7	255.1	315.9	2 541.3
April	1 084.8	230.6	157.1	344.8	152.1	258.5	314.5	2 542.4
May	1 087.8	229.4	158.2	341.2	152.3	262.7	312.8	2 544.3
June	1 090.2	230.9	159.9	338.9	152.7	267.0	311.8	2 551.2
July	1 092.2	234.5	162.8	340.4	153.8	269.2	312.0	2 564.9
August	1 093.9	239.2	166.1	345.7	155.7	268.7	313.0	2 582.4
September	1 094.2	243.5	168.9	352.0	158.3	266.0	314.3	2 597.1
October	1 094.1	246.3	170.4	355.3	160.7	262.7	315.8	2 605.3
November	1 094.1	247.1	170.7	353.4	161.9	261.9	317.9	2 606.9
December	1 094.4	246.7	170.4	346.3	161.8	265.1	321.1	2 605.9
1998								
January	1 094.0	246.2	170.6	336.3	161.0	272.3	325.9	2 606.3
February	1 093.0	245.7	171.4	326.1	160.2	281.5	331.4	2 609.4
March	1 091.9	245.1	172.8	317.5	159.4	290.5	336.9	2 614.0
April	1 090.4	245.2	174.3	309.9	158.6	300.0	340.9	2 619.3

(a) See paragraph 3 of the Explanatory Notes

RETAIL TURNOVER, By Industry Group(a)—Queensland: All series

Month	Food retailing	Department stores	Clothing and soft good retailing	Household good retailing	Recreational good retailing	Other retailing	Hospitality and services	Total
ORIGINAL (\$ million)								
1997								
February	709.9	120.3	99.0	168.9	99.3	199.6	327.8	1 724.9
March	780.1	139.5	106.5	165.1	107.4	206.5	362.2	1 867.3
April	750.6	135.4	115.0	167.7	104.2	213.0	360.4	1 846.3
May	795.2	161.5	139.2	180.1	105.4	228.6	375.5	1 985.6
June	751.1	136.5	125.0	174.9	107.9	211.3	362.9	1 869.6
July	801.6	158.2	132.2	180.1	117.7	233.2	392.3	2 015.3
August	794.3	142.8	130.0	172.0	124.3	227.0	393.6	1 983.9
September	773.4	163.3	147.7	173.4	125.7	221.1	375.7	1 980.3
October	833.5	164.0	159.6	189.8	129.2	229.6	410.4	2 116.1
November	802.8	182.4	154.8	196.6	125.3	228.6	408.8	2 099.4
December	900.3	309.6	204.0	249.2	174.6	306.5	480.6	2 624.8
1998								
January	877.7	153.2	157.6	188.0	125.1	208.0	400.7	2 110.4
February	784.4	116.1	125.3	168.7	103.5	196.9	345.6	1 840.3
March	841.4	129.0	133.8	172.6	106.8	208.5	387.7	1 979.9
April	847.3	153.1	141.1	167.2	116.2	210.6	405.5	2 041.1
SEASONALLY ADJUSTED (\$ million)								
1997								
February	774.2	164.6	126.3	187.3	111.0	231.7	373.7	1 968.9
March	786.0	169.2	122.6	181.1	118.5	220.6	376.0	1 974.1
April	772.8	155.6	123.7	182.4	113.9	239.2	381.6	1 969.1
May	779.4	160.1	137.6	182.1	112.9	233.3	387.2	1 992.6
June	788.3	144.2	128.8	180.1	116.4	226.4	387.7	1 971.9
July	792.5	180.1	135.6	183.2	123.4	239.9	390.0	2 044.6
August	799.3	158.2	137.2	179.9	133.6	230.3	391.0	2 029.5
September	784.8	171.7	142.3	178.3	137.2	215.0	383.9	2 013.1
October	799.6	158.4	148.9	187.5	133.9	217.1	398.9	2 044.4
November	815.8	166.2	151.4	192.2	121.9	224.6	400.8	2 072.9
December	814.9	165.3	146.2	184.0	109.8	216.8	389.4	2 026.3
1998								
January	855.8	167.3	158.5	192.3	122.1	223.8	382.8	2 102.5
February	854.9	158.8	160.0	188.4	114.9	228.3	394.4	2 099.8
March	861.4	161.5	153.6	179.2	114.8	223.9	410.6	2 105.1
April	854.3	169.6	151.4	192.4	127.1	233.8	424.0	2 152.5
TREND ESTIMATES (\$ million)								
1997								
February	772.0	164.4	127.2	183.4	109.7	228.5	366.5	1 949.4
March	771.1	162.3	126.5	183.2	112.0	229.9	375.1	1 965.3
April	786.0	160.4	127.1	182.5	114.4	231.7	381.9	1 979.3
May	785.5	159.8	129.0	181.5	117.4	232.7	386.0	1 990.5
June	786.0	160.4	132.0	180.9	121.4	232.3	388.0	2 001.3
July	787.4	161.9	135.6	180.9	125.6	230.2	389.6	2 011.9
August	790.4	163.7	139.0	181.7	129.1	226.8	391.2	2 022.7
September	795.6	165.2	142.5	183.4	130.3	223.3	392.0	2 032.7
October	803.6	165.6	146.3	185.3	128.6	220.7	391.7	2 041.9
November	814.4	164.9	149.8	186.9	124.7	219.9	391.6	2 052.2
December	827.1	164.1	152.5	187.8	120.5	220.9	392.6	2 065.3
1998								
January	839.6	163.9	154.2	188.0	117.9	223.1	395.4	2 081.9
February	850.3	164.0	155.2	187.8	117.2	225.5	399.8	2 099.6
March	858.6	164.1	155.5	187.6	117.5	227.8	405.3	2 117.8
April	863.9	165.0	155.3	187.1	118.7	229.6	410.3	2 134.0

(a) See paragraph 3 of the Explanatory Notes

RETAIL TURNOVER, By Industry Group(a)—South Australia: All series

Month	Food retailing	Department stores	Clothing and soft good retailing	Household good retailing	Recreational good retailing	Other retailing	Hospitality and services	Total
ORIGINAL (\$ million)								
1997								
February	317.3	69.7	28.1	67.0	28.7	56.5	127.1	694.5
March	350.0	82.7	34.9	70.1	32.0	60.7	131.9	762.4
April	331.2	86.2	45.3	73.3	32.6	65.0	128.4	762.1
May	344.6	96.2	45.3	77.2	32.0	71.3	132.4	798.9
June	320.2	80.0	40.7	74.9	29.6	63.9	132.5	741.8
July	355.0	97.9	45.8	83.1	31.6	67.4	123.7	804.6
August	349.6	80.5	38.7	83.7	32.0	65.9	127.5	777.8
September	348.9	84.8	38.8	84.5	33.2	65.8	121.1	777.2
October	370.4	92.0	46.3	94.3	34.6	76.0	126.5	840.1
November	365.4	105.6	45.6	95.5	36.6	79.1	129.0	856.9
December	418.2	160.5	58.3	121.3	52.5	107.7	148.4	1 066.7
1998								
January	396.1	93.8	45.3	94.2	33.4	77.0	116.1	856.0
February	344.9	76.0	33.0	81.9	29.1	69.3	107.4	741.5
March	373.6	78.4	42.9	85.2	34.2	75.8	120.4	810.5
April	385.7	91.6	49.7	81.6	31.8	80.9	127.3	848.6
SEASONALLY ADJUSTED (\$ million)								
1997								
February	347.1	94.6	36.6	77.6	32.4	64.6	137.0	789.8
March	349.1	93.8	39.3	75.8	33.1	65.5	134.7	791.2
April	339.9	91.0	40.7	75.6	34.4	68.5	135.3	785.4
May	338.8	94.1	42.1	79.7	33.8	69.4	136.8	794.7
June	344.8	89.4	41.7	76.1	34.0	68.2	145.0	799.2
July	355.5	101.5	46.8	84.0	33.2	69.3	132.4	822.8
August	356.4	91.3	43.3	85.0	35.3	66.9	133.1	811.2
September	362.9	94.6	42.2	87.3	35.1	66.3	124.2	812.6
October	355.5	92.4	45.5	92.5	34.8	74.5	122.6	817.9
November	360.4	96.3	45.3	91.7	34.2	77.7	122.7	828.3
December	357.5	85.9	40.7	92.4	33.5	81.2	118.6	809.9
1998								
January	395.0	108.0	46.5	98.1	33.5	80.9	110.3	872.2
February	375.9	102.8	42.9	94.7	32.7	78.7	115.4	843.1
March	379.1	92.2	46.3	86.4	36.3	81.7	123.9	845.9
April	386.2	94.1	46.7	88.7	33.6	84.8	131.9	865.8
TREND ESTIMATES (\$ million)								
1997								
February	344.4	93.7	38.3	75.5	33.8	64.9	136.6	788.5
March	344.5	93.3	39.4	75.9	33.4	66.3	137.3	790.6
April	344.5	93.1	40.6	76.6	33.4	67.4	137.8	793.3
May	345.3	93.3	41.8	77.8	33.6	67.9	137.7	797.2
June	347.6	93.8	42.9	79.8	34.0	67.9	136.8	802.7
July	350.5	94.0	43.7	82.3	34.4	68.1	134.8	807.8
August	353.8	93.8	44.1	85.0	34.6	68.9	131.7	811.9
September	357.2	93.7	44.2	88.1	34.6	70.7	127.5	815.9
October	360.7	94.2	44.0	90.9	34.5	73.2	122.9	820.3
November	364.5	95.1	43.9	92.8	34.2	76.0	119.4	825.8
December	369.2	96.3	44.0	93.5	34.0	78.4	117.8	833.0
1998								
January	374.3	97.3	44.4	93.3	33.9	80.2	117.8	841.0
February	379.0	97.8	44.8	92.5	33.9	81.5	119.1	848.6
March	382.9	97.6	45.3	91.4	34.0	82.5	121.2	855.5
April	386.2	97.2	45.7	90.0	34.2	83.1	123.7	861.8

(a) See paragraph 3 of the Explanatory Notes

RETAIL TURNOVER, By Industry Group(a)—Western Australia: All series

Month	Food retailing	Department stores	Clothing and soft good retailing	Household good retailing	Recreational good retailing	Other retailing	Hospitality and services	Total
ORIGINAL (\$ million)								
1997								
February	428.7	76.2	50.3	157.2	49.1	91.7	150.4	1 003.5
March	467.0	89.1	56.7	157.1	50.1	87.4	160.0	1 067.4
April	426.1	88.5	59.0	165.0	58.2	101.4	161.8	1 060.1
May	454.4	107.0	65.2	174.2	59.1	103.2	163.1	1 126.2
June	417.5	81.2	53.2	163.1	55.3	91.2	157.9	1 019.4
July	445.1	95.3	50.2	167.8	59.6	105.8	173.4	1 097.2
August	445.8	87.5	45.2	170.2	56.3	103.7	171.8	1 080.6
September	437.8	94.7	44.3	173.5	57.7	111.6	171.9	1 091.5
October	478.5	104.8	53.8	182.4	60.4	113.1	171.1	1 164.2
November	464.4	110.3	50.8	190.3	60.2	109.4	168.3	1 153.7
December	546.4	188.3	70.6	227.9	86.5	151.7	193.1	1 464.4
1998								
January	503.8	87.6	54.0	184.5	56.4	96.4	155.0	1 137.8
February	451.5	72.9	42.6	156.5	52.1	87.0	145.0	1 007.6
March	475.8	83.4	48.1	176.8	51.9	88.5	153.2	1 077.7
April	488.4	101.7	48.7	171.9	54.7	87.0	148.7	1 101.1
SEASONALLY ADJUSTED (\$ million)								
1997								
February	458.8	102.3	64.0	175.3	55.5	106.7	162.4	1 125.0
March	467.3	99.8	65.1	175.7	54.5	99.0	157.8	1 119.1
April	434.9	97.2	60.6	179.5	60.5	105.3	166.6	1 104.7
May	449.7	98.9	60.0	171.8	62.3	104.7	168.2	1 115.6
June	452.3	89.5	53.6	171.5	62.8	103.3	171.7	1 104.6
July	446.2	104.8	49.4	166.3	61.4	107.1	176.1	1 111.3
August	455.1	98.8	49.7	184.4	59.6	110.5	178.9	1 137.0
September	451.0	108.1	45.8	180.3	60.3	109.7	171.6	1 126.8
October	471.6	102.6	52.6	173.8	60.1	105.7	164.5	1 130.8
November	462.6	100.9	48.8	184.6	58.1	106.5	162.7	1 124.1
December	468.5	103.6	50.8	171.3	57.1	103.3	165.6	1 120.2
1998								
January	491.2	98.8	55.5	183.8	58.5	102.3	151.0	1 141.1
February	484.8	98.1	54.4	174.7	59.5	101.1	157.0	1 129.6
March	477.3	100.1	54.6	194.5	57.2	102.0	153.6	1 139.3
April	494.1	104.4	50.6	184.7	57.4	91.3	152.7	1 135.3
TREND ESTIMATES (\$ million)								
1997								
February	457.7	99.8	65.5	174.0	54.9	101.1	160.0	1 111.6
March	458.6	98.9	63.7	175.2	57.0	102.4	162.7	1 115.1
April	448.9	97.9	60.9	175.1	59.2	103.6	165.9	1 114.9
May	448.1	97.6	57.7	174.4	60.8	104.9	169.4	1 114.3
June	448.2	98.1	54.3	174.1	61.6	106.1	172.3	1 114.9
July	449.8	99.5	51.4	174.6	61.6	107.2	174.0	1 117.6
August	452.9	101.3	49.4	176.0	61.0	108.0	173.9	1 122.1
September	457.4	102.8	48.7	177.2	60.1	108.0	171.8	1 125.7
October	462.7	103.1	49.2	178.0	59.2	107.4	168.2	1 127.9
November	468.3	102.5	50.6	178.6	58.7	106.1	164.1	1 128.9
December	474.1	101.4	52.0	179.2	58.4	104.3	160.4	1 129.7
1998								
January	479.0	100.6	53.0	180.4	58.2	102.4	157.6	1 131.1
February	483.3	100.4	53.5	182.3	58.0	100.4	155.3	1 133.2
March	486.9	100.4	53.8	184.4	57.8	98.5	153.6	1 135.5
April	(b)489.1	101.0	53.5	186.5	57.7	96.7	152.4	1 137.4

(a) See paragraph 3 of the Explanatory Notes

(b) Possible break in series. See paragraph 10 of the Explanatory Notes.

RETAIL TURNOVER, By Industry Group(a)—Tasmania: All series

Month	Food retailing	Department stores	Clothing and soft good retailing	Household good retailing	Recreational good retailing	Other retailing	Hospitality and services	Total
ORIGINAL (\$ million)								
1997								
February	103.3	n.p.	12.4	23.6	15.9	n.p.	36.6	233.8
March	113.3	n.p.	14.4	23.1	13.6	n.p.	38.7	252.1
April	109.9	n.p.	15.0	26.5	16.2	n.p.	40.1	254.6
May	115.9	n.p.	15.3	26.2	15.4	n.p.	38.6	263.7
June	107.1	n.p.	13.3	26.6	14.5	n.p.	36.3	244.1
July	114.8	n.p.	15.0	26.5	17.6	n.p.	34.8	259.4
August	112.4	n.p.	14.1	25.2	15.7	n.p.	36.5	255.3
September	109.9	n.p.	14.2	25.2	16.6	n.p.	37.6	255.8
October	123.5	n.p.	15.2	28.1	17.3	n.p.	39.9	278.1
November	121.2	n.p.	16.2	29.3	18.4	n.p.	39.3	283.9
December	127.8	n.p.	24.1	39.8	28.9	n.p.	44.3	349.8
1998								
January	117.0	n.p.	15.2	20.8	18.0	n.p.	39.5	260.4
February	108.2	n.p.	14.4	20.9	17.5	n.p.	37.1	245.1
March	113.9	n.p.	15.0	22.8	16.8	n.p.	38.7	258.3
April	113.5	n.p.	17.7	23.3	15.8	n.p.	37.3	257.2
SEASONALLY ADJUSTED (\$ million)								
1997								
February	110.4	n.p.	14.8	28.1	16.0	n.p.	37.1	257.2
March	113.6	n.p.	15.2	25.5	15.0	n.p.	38.8	260.7
April	112.4	n.p.	14.2	27.0	16.9	n.p.	41.2	261.2
May	113.6	n.p.	14.2	25.1	16.1	n.p.	39.4	259.4
June	115.5	n.p.	13.9	26.5	16.7	n.p.	39.9	263.7
July	113.7	n.p.	15.2	26.9	18.8	n.p.	38.0	267.2
August	113.9	n.p.	15.1	26.2	16.5	n.p.	38.3	267.2
September	115.1	n.p.	16.2	26.2	18.4	n.p.	40.8	275.2
October	121.7	n.p.	16.4	27.5	17.5	n.p.	38.7	275.7
November	119.6	n.p.	16.2	28.3	18.4	n.p.	38.5	276.0
December	113.1	n.p.	16.9	29.8	19.5	n.p.	36.4	269.2
1998								
January	113.2	n.p.	15.9	23.9	18.3	n.p.	36.6	259.2
February	115.8	n.p.	17.0	25.3	17.4	n.p.	37.6	269.8
March	115.4	n.p.	15.2	23.8	17.7	n.p.	39.0	265.4
April	113.9	n.p.	17.1	23.8	16.6	n.p.	38.3	261.3
TREND ESTIMATES (\$ million)								
1997								
February	111.6	n.p.	15.2	27.5	15.5	n.p.	39.2	258.8
March	112.5	n.p.	14.7	26.7	15.9	n.p.	39.2	259.3
April	113.1	n.p.	14.4	26.2	16.3	n.p.	39.3	260.2
May	113.4	n.p.	14.3	26.0	16.7	n.p.	39.4	261.7
June	114.0	n.p.	14.5	26.0	17.0	n.p.	39.5	264.1
July	114.9	n.p.	14.9	26.3	17.3	n.p.	39.4	267.2
August	115.9	n.p.	15.3	26.7	17.7	n.p.	39.2	270.3
September	116.7	n.p.	15.8	27.2	18.0	n.p.	38.9	272.4
October	117.1	n.p.	16.2	27.5	18.2	n.p.	38.4	273.1
November	116.9	n.p.	16.4	27.5	18.4	n.p.	38.0	272.1
December	116.3	n.p.	16.4	27.0	18.4	n.p.	37.7	270.0
1998								
January	115.5	n.p.	16.4	26.2	18.2	n.p.	37.5	267.7
February	114.8	n.p.	16.4	25.3	17.9	n.p.	37.6	265.6
March	114.3	n.p.	16.4	24.4	17.5	n.p.	37.8	263.8
April	113.8	n.p.	16.4	23.6	17.2	n.p.	38.1	262.5

(a) See paragraph 3 of the Explanatory Notes

RETAIL TURNOVER, By Industry Group(a)—Northern Territory: All series

Month	Food retailing	Department stores	Clothing and soft good retailing	Household good retailing	Recreational good retailing	Other retailing	Hospitality and services	Total
ORIGINAL (\$ million)								
1997								
February	51.3	n.p.	4.1	9.3	4.5	n.p.	16.3	98.0
March	55.8	n.p.	4.5	9.4	4.7	n.p.	17.5	105.1
April	56.3	n.p.	5.4	9.6	6.2	n.p.	18.2	108.5
May	58.1	n.p.	5.9	10.2	6.5	n.p.	19.4	114.6
June	57.2	n.p.	5.9	9.4	7.0	n.p.	20.2	113.8
July	63.3	n.p.	6.3	12.2	7.3	n.p.	22.7	128.4
August	60.9	n.p.	6.0	11.9	7.5	n.p.	21.5	125.9
September	60.0	n.p.	5.8	11.1	7.3	n.p.	20.1	121.9
October	61.0	n.p.	5.5	12.5	7.4	n.p.	21.3	125.9
November	56.2	n.p.	5.9	11.6	7.5	n.p.	18.6	117.5
December	59.7	n.p.	7.3	13.3	9.4	n.p.	19.9	133.9
1998								
January	53.6	n.p.	3.9	10.0	7.1	n.p.	17.1	106.8
February	49.9	n.p.	3.6	11.2	7.2	n.p.	16.1	102.6
March	53.9	n.p.	4.0	13.0	8.0	n.p.	17.5	112.8
April	55.9	n.p.	4.3	12.3	6.9	n.p.	18.3	116.9
SEASONALLY ADJUSTED (\$ million)								
1997								
February	57.9	n.p.	5.6	10.6	5.6	n.p.	19.5	115.0
March	57.9	n.p.	5.5	10.0	5.6	n.p.	18.5	112.6
April	58.3	n.p.	5.9	10.0	6.2	n.p.	19.3	114.4
May	57.8	n.p.	6.1	10.0	6.5	n.p.	19.2	114.0
June	57.6	n.p.	5.6	9.4	6.8	n.p.	20.1	114.1
July	57.6	n.p.	5.3	11.5	6.4	n.p.	20.5	117.4
August	56.9	n.p.	5.2	11.8	6.8	n.p.	19.5	117.2
September	59.7	n.p.	5.8	10.8	6.9	n.p.	18.5	119.9
October	58.8	n.p.	5.3	12.1	6.9	n.p.	19.9	120.3
November	56.3	n.p.	6.0	11.6	7.5	n.p.	19.2	117.7
December	56.6	n.p.	5.6	11.2	8.6	n.p.	19.2	117.7
1998								
January	57.8	n.p.	4.6	11.0	8.5	n.p.	19.4	119.5
February	56.5	n.p.	4.9	12.7	8.7	n.p.	19.2	120.3
March	56.0	n.p.	4.8	13.0	9.1	n.p.	18.4	120.2
April	57.4	n.p.	4.7	13.8	6.9	n.p.	19.7	123.3
TREND ESTIMATES (\$ million)								
1997								
February	58.1	n.p.	5.7	10.0	5.7	n.p.	18.9	113.9
March	57.9	n.p.	5.7	10.0	5.9	n.p.	19.1	113.7
April	57.8	n.p.	5.7	10.0	6.1	n.p.	19.4	113.8
May	57.7	n.p.	5.7	10.2	6.3	n.p.	19.6	114.4
June	57.8	n.p.	5.6	10.4	6.5	n.p.	19.7	115.4
July	57.9	n.p.	5.6	10.8	6.6	n.p.	19.7	116.6
August	58.0	n.p.	5.6	11.1	6.8	n.p.	19.6	117.7
September	58.0	n.p.	5.6	11.4	6.9	n.p.	19.5	118.4
October	57.9	n.p.	5.5	11.5	7.3	n.p.	19.4	118.8
November	57.6	n.p.	5.5	11.5	7.7	n.p.	19.3	118.9
December	57.2	n.p.	5.3	11.6	8.1	n.p.	19.2	119.0
1998								
January	56.9	n.p.	5.1	11.9	8.4	n.p.	19.2	119.4
February	56.7	n.p.	4.9	12.3	8.5	n.p.	19.2	120.0
March	56.6	n.p.	4.7	12.8	8.4	n.p.	19.2	120.8
April	56.7	n.p.	4.6	13.2	8.3	n.p.	19.1	121.7

(a) See paragraph 3 of the Explanatory Notes

RETAIL TURNOVER, By Industry Group(a)—Australian Capital Territory: All series

Month	Food retailing	Department stores	Clothing and soft good retailing	Household good retailing	Recreational good retailing	Other retailing	Hospitality and services	Total
ORIGINAL (\$ million)								
1997								
February	70.9	18.1	11.4	21.5	10.1	16.7	28.2	176.9
March	77.0	21.3	12.5	21.8	12.0	19.4	28.9	192.9
April	73.1	20.6	15.4	22.2	11.6	20.7	31.3	194.9
May	78.6	24.5	16.9	23.7	12.8	21.7	32.5	210.7
June	72.7	20.0	14.5	24.3	12.0	19.5	29.9	192.9
July	77.3	25.6	15.5	27.1	12.7	21.5	34.0	213.6
August	78.5	19.2	14.0	25.2	11.8	22.6	32.9	204.1
September	76.7	21.3	13.5	25.0	12.0	20.4	33.6	202.4
October	83.6	23.2	13.7	27.9	11.8	23.8	34.4	218.3
November	82.7	26.3	14.2	28.5	12.6	24.6	34.3	223.2
December	90.0	44.0	21.2	38.1	19.9	35.5	34.1	282.6
1998								
January	80.2	23.0	11.7	24.5	9.9	25.3	30.0	204.6
February	75.4	17.3	10.8	22.1	10.2	23.0	30.5	189.3
March	81.5	19.8	11.7	23.9	12.6	23.1	33.2	205.9
April	79.6	24.8	13.6	22.6	11.3	23.3	39.2	214.4
SEASONALLY ADJUSTED (\$ million)								
1997								
February	76.0	24.8	14.0	24.3	11.6	20.9	32.4	203.9
March	75.1	23.7	13.4	22.2	12.2	21.1	28.2	195.7
April	75.8	20.8	14.2	23.9	12.6	21.7	31.2	200.1
May	76.9	23.4	16.0	24.9	13.1	22.4	31.6	208.3
June	75.9	21.3	14.3	24.6	13.0	22.0	31.7	202.8
July	79.4	27.0	15.7	28.2	13.4	23.7	32.8	220.2
August	78.6	23.4	16.4	26.3	12.3	23.4	32.8	213.1
September	79.4	24.0	14.2	25.9	12.6	20.1	33.4	209.7
October	80.0	23.6	13.8	26.7	12.5	21.8	32.6	211.0
November	82.0	25.2	15.2	28.5	11.5	22.2	33.4	218.0
December	80.1	22.9	14.3	27.4	13.0	24.3	31.5	213.6
1998								
January	81.2	27.0	12.7	25.3	10.8	28.0	33.0	218.1
February	80.6	23.6	13.2	24.8	11.7	28.9	35.2	218.0
March	80.8	22.9	12.6	24.9	12.9	25.3	32.6	212.0
April	81.1	24.4	12.3	24.0	12.0	24.3	38.6	216.9
TREND ESTIMATES (\$ million)								
1997								
February	76.0	23.7	14.2	23.6	12.4	20.6	31.3	202.4
March	75.9	23.3	14.2	23.8	12.4	21.2	31.0	202.1
April	76.0	23.0	14.5	24.2	12.6	21.8	31.0	203.0
May	76.4	23.0	14.8	24.7	12.8	22.3	31.2	205.1
June	77.1	23.3	15.1	25.4	12.9	22.5	31.8	208.0
July	78.0	23.6	15.3	26.1	12.9	22.3	32.4	210.7
August	78.9	24.0	15.3	26.7	12.8	22.0	32.8	212.5
September	79.7	24.3	15.0	27.1	12.5	22.0	32.9	213.5
October	80.3	24.4	14.7	27.2	12.3	22.5	32.8	214.1
November	80.7	24.4	14.3	27.0	12.1	23.5	32.7	214.7
December	80.8	24.4	13.9	26.6	12.0	24.7	32.9	215.2
1998								
January	80.9	24.4	13.5	26.1	11.9	25.7	33.4	215.9
February	80.9	24.3	13.1	25.4	12.0	26.4	34.1	216.2
March	80.9	24.2	12.7	24.8	12.0	26.7	34.9	216.3
April	80.9	24.0	12.4	24.2	12.1	26.6	35.7	216.1

(a) See paragraph 3 of the Explanatory Notes

EXPLANATORY NOTES

INTRODUCTION

1 This publication presents monthly estimates of the value of turnover of retail businesses classified by industry, and by State. The principal objective of the Retail Trade survey is to show month to month movement of retail turnover.

2 Estimates of turnover contained in this publication are based on a survey of about 7,000 retail and selected service businesses (covering 20,000 outlets). All 'large' businesses are included in the survey, while a sample of about 4,400 'smaller' businesses is selected. The 'large' business' contribution of approximately 54% of the total estimate ensures a highly reliable Australian total turnover estimate.

SCOPE AND COVERAGE

3 The Retail Trade survey covers all employing businesses, with at least one retail establishment. The scope of the survey (classified according to the Australian and New Zealand Standard Industrial Classification [ANZSIC]) is detailed below:

- Food Retailing
 - Supermarkets and grocery stores (5110)
and non-petrol sales of identified convenience stores of petrol stations
 - Takeaway food retailing (5125)
 - Other food retailing
 - Fresh meat, fish and poultry retailing (5121)
 - Fruit and vegetable retailing (5122)
 - Liquor retailing (5123)
 - Bread and cake retailing (5124)
 - Specialised food retailing n.e.c. (5129)
- Department Stores (5210)
- Clothing and Soft Good Retailing
 - Clothing retailing (5221)
 - Other clothing related retailing
 - Footwear retailing (5222)
 - Fabric and other soft good retailing (5223)
- Household Good Retailing
 - Furniture and floorcovering retailing
 - Furniture retailing (5231)
 - Floor covering retailing (5232)
 - Domestic hardware and houseware retailing (5233)
 - Domestic appliance retailing
 - Domestic appliance retailing (5234)
 - Recorded music retailing (5235)
- Recreational Good Retailing
 - Newspaper, book and stationery retailing (5243)
 - Other recreational good retailing
 - Sport and camping equipment retailing (5241)
 - Toy and game retailing (5242)
 - Photographic equipment retailing (5244)
- Other Retailing
 - Pharmaceutical, cosmetic and toiletry retailing (5251)
 - Other retailing
 - Antique and used good retailing (5252)
 - Garden supplies retailing (5253)
 - Flower retailing (5254)
 - Watch and jewellery retailing (5255)
 - Retailing n.e.c. (5259)

EXPLANATORY NOTES

SCOPE AND COVERAGE *continued*

- Hospitality and Services
 - Hotels and licensed clubs
 - Pubs, taverns and bars (5720)
 - Clubs (Hospitality) (5740)
 - Cafes and restaurants (5730)
 - Selected services
 - Video hire outlets (9511)
 - Hairdressing and beauty salons (9526).

DEFINITION OF TURNOVER

4 Turnover includes retail sales; wholesale sales; takings from repairs, meals and hiring of goods (except for rent, leasing and hiring of land and buildings); and commissions from agency activity (e.g. commissions received from collecting dry cleaning, selling lottery tickets, etc.) and net takings from gaming machines etc.

SEASONAL ADJUSTMENT

5 Seasonal adjustment is a means of removing the estimated effects of normal seasonal variation from the series so that the effects of other influences can be more clearly recognised.

6 In the seasonal adjustment of the turnover estimates, account has been taken of both normal seasonal factors and 'trading-day' effects (arising from the varying length of each month and the varying numbers of Sundays, Mondays, Tuesdays, etc. in the month). There is some evidence suggesting possible changes in retail trading patterns, including increased activity on weekends and public holidays. The impact of these changes on the seasonal pattern and trading day component of the data is being investigated and can only be confirmed once sufficient data becomes available. While these changes may impact on the unadjusted and seasonally adjusted data, the trend estimate is less likely to be affected. Further, the seasonal adjustment does not remove from the series the effect of irregular influences (e.g. abnormal weather, industrial disputes). The seasonally adjusted estimates still reflect the sampling and non-sampling errors to which the original estimates are subject.

7 The State component series have been seasonally adjusted independently. Therefore, the adjusted components may not add to the Australian Group totals.

8 As happens with all seasonally adjusted series, the seasonal factors are reviewed annually to take account of each additional year's data. For Retail Trade, the results of the latest review are shown in the July issue each year.

TREND ESTIMATES

9 Most monthly trend estimates in this publication have been obtained by smoothing the seasonally adjusted series using a centred 13-term Henderson weighted moving average (7-term for quarterly series). However, to estimate the last six monthly trend values (or the last three quarters) a set of asymmetric moving averages have been designed to reduce a small bias associated with estimating these recent values when the trend growth is increasing or decreasing. Overall, revision to the estimates should be reduced, however, there may be a greater revision to the estimates whenever there are large irregular movements in the seasonally adjusted series.

10 For further information, see *A Guide to Interpreting Time Series — Monitoring 'Trends': an Overview* (1348.0) or contact the Assistant Director, Time Series Analysis on (02) 6252 6345.

CONSTANT PRICE STATISTICS

11 To enable analysis of the movement of retail activity in 'real' terms, estimates of retail turnover at constant (average 1989–90) prices are compiled and published each quarter. Constant price retail turnover series are derived by deflating the original current price series of retail turnover by specially compiled indexes of price change.

EXPLANATORY NOTES

RELIABILITY OF ESTIMATES

12 There are two types of error possible in estimates of retail turnover:

Sampling error which occurs because a sample, rather than the entire population, is surveyed. One measure of the likely difference resulting from not including all establishments in the survey is given by the standard error, see below.

Non sampling error which arises from inaccuracies in collecting, recording and processing the data. The most significant of these errors are: misreporting of data items; deficiencies in coverage; non-response; and processing errors. Every effort is made to minimise reporting error by the careful design of questionnaires, intensive training and supervision of interviewers, and efficient data processing procedures.

STANDARD ERRORS

13 Seasonally adjusted, trend and constant price estimates are also subject to sampling variability. For seasonally adjusted estimates, the standard errors are approximately the same as for the original estimates. For trend estimates, the standard errors are likely to be smaller. For constant price estimates, the standard errors may be up to 10% higher than those for the corresponding current price estimates because of the sampling variability contained in the prices data used to deflate the current price estimates.

14 To assist users in assessing the reliability of estimates, each data series has been given a grading of A to D. Where:

- A represents a relative standard error on level of less than 2%. The published estimates are highly reliable for movement analysis;
- B represents a relative standard error on level between 2 and 5%, meaning the estimate is reliable for movement analysis purposes;
- C represents a relative standard error on level between 5 and 10%, meaning users are advised to exercise some caution in interpreting movements for such series; and
- D represents a relative standard error on level greater than 10% (mainly affects unpublished state by industry series).

15 The table below provides an indicator of reliability for key retail turnover estimates.

	<i>Food retailing</i>	<i>Department stores</i>	<i>Clothing and soft good retailing</i>	<i>Household good retailing</i>	<i>Recreational good retailing</i>	<i>Other retailing</i>	<i>Hospitality and services</i>	<i>Total</i>
NSW	B	A	B	C	C	C	C	A
Vic	B	A	B	C	C	C	C	A
Qld	B	A	B	C	C	C	C	A
SA	B	A	B	C	C	C	C	A
WA	B	A	B	C	C	C	C	A
Tas	B	—	B	C	C	—	C	B
NT	B	—	B	C	C	—	C	B
ACT	B	A	B	C	C	C	C	A
Australia	A	A	A	B	B	B	B	A

EXPLANATORY NOTES

IMPROVEMENTS TO COVERAGE	<p>16 The Retail Trade survey, like most ABS economic surveys, takes its frame (i.e. the retail business population) from the ABS Business Register. The frame is updated quarterly to take account of new businesses, cessations and other general business changes. The Business Register primarily sources its information about new businesses from those businesses applying for group employer (GE) registration with the Australian Taxation Office (ATO).</p>
BACKCASTING OF SERIES	<p>17 Improvements to coverage were undertaken and introduced to the retail trade series from the July 1997 issue. The series was backcast to 1982.</p> <p>18 The improvements focused on accounting for the impact of businesses known to be missing from the Business Register, and the inclusion of an allowance for the time it takes for a newly registered business to get on to a survey frame.</p>
FURTHER INFORMATION	<p>19 For more information on these adjustments see any one of the July to October 1997 issues of this publication, or the ABS Information paper—<i>Improvements to ABS Economic Statistics 1997</i> (1357.0).</p>
UNPUBLISHED DATA	<p>20 The Retail Survey Special Data Service provides additional retail trade statistics which include further State industry dissections through to ‘top ten’ industry reports. For more information, contact the Retail Trade Special Data Services manager on (02) 6252 5220.</p>
RELATED PUBLICATIONS	<p>21 Current publications produced by the ABS are listed in the <i>Catalogue of Publications and Products, Australia</i> (1101.0). The ABS also issues, on Tuesdays and Fridays, a <i>Release Advice</i> (1105.0) which lists publications to be released in the next few days. The Catalogue and Release Advice are available from any ABS office.</p>
SYMBOLS AND OTHER USAGES	<p>n.p. not available for publication, but included in totals where applicable r revised</p>

The ABS publishes a wide range of information on Australia's economic and social conditions. A catalogue of publications and products is available from any of our offices (see below).

INFORMATION CONSULTANCY SERVICES

Information tailored to special needs of clients can be obtained from the Information Consultancy Service available at ABS Offices (see below).

ABS PRODUCTS

A large number of ABS products is available from the ABS Bookshops (see below). The ABS also provides a subscription service – you can telephone the ABS Subscription Service Australia wide toll free on 1300 3663 23.

ELECTRONIC SERVICES

A large range of data is available via on-line services, diskette, magnetic tape, tape cartridge and CD ROM. For more details about our electronic data services, contact any ABS office (see below) or e-mail us at:

- client.services@abs.gov.au

GENERAL SALES AND INQUIRIES

- Sydney 02 9268 4611
 - Melbourne 03 9615 7755
 - Brisbane 07 3222 6351
 - Perth 08 9360 5140
 - Adelaide 08 8237 7400
 - Hobart 03 6222 5800
 - Darwin 08 8943 2111
 - Canberra 02 6252 6627
-
- Information Services, ABS
PO Box 10, Belconnen ACT 2616



2850100004983

ISSN 1032-3651

RRP \$16.50